

**VIBRATION SOURCE TECHNOLOGY CO., LTD.**

**Vibration Testing Laboratory**

**Add: No.29, Lane 65, Sanjun St., Shulin Dist., New Taipei City 23864,  
Taiwan (R.O.C.)**

**Tel: 886-2-2688-0999 Fax: 886-2-2688-0977**

**E-mail: info@vibsource.com**

**Report No.: VS-TV-130129-01**

# Test Report

**Date of Issue: 2024 / 01 / 29**

Product Name	<b>IVX-1000-ICY</b>
Applicant Name	<b>Vecow Co., Ltd.</b>
Applicant Address	<b>3F., No. 10, Jiankang Rd., Zhonghe Dist., New Taipei City 23586, Taiwan</b>

The result of this test report, performed by

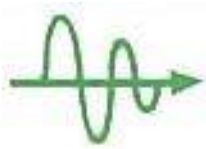
VIBRATION SOURCE TECHNOLOGY CO., LTD. is specified in this report.

When the cover and the following 22 pages are separated, the validity of this report no longer exists.

Without the consent of the laboratory, this test report shall not be copied excerpts, but except for full-text copy.

**Signature**





# VIBRATION SOURCE TECHNOLOGY CO., LTD.

## Vibration Testing Laboratory

Add: No.29, Lane 65, Sanjun St., Shulin Dist., New Taipei City 23864,  
Taiwan (R.O.C.)

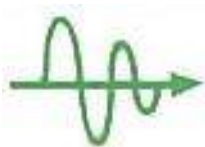
Tel: 886-2-2688-0999 Fax: 886-2-2688-0977

E-mail: info@vibsource.com

Report No.: VS-TV-130129-01

### I 、 Test Information

Test Report NO.	VS-TV-1130129-01
Applicant Name	Vecow Co., Ltd.
Product	High-Performance Fanless System
Model	IVX-1000-ICY
CPU	13th Gen Intel® Core™ i7-13700TE@1.10GHz
RAM	INNODISK DDR5 4800 32GB W/T SODIMM x 2
SSD	INNODISK 2.5" SATA SSD 3TE7 512GB x 6
Quantity	1 PCS
Date of Test	Jan 19 ~ 26, 2024
Test Standard	IEC 61373 Category 1- Class B-2010



# VIBRATION SOURCE TECHNOLOGY CO., LTD.

## Vibration Testing Laboratory

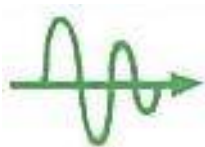
Add: No.29, Lane 65, Sanjun St., Shulin Dist., New Taipei City 23864,  
Taiwan (R.O.C.)

Tel: 886-2-2688-0999 Fax: 886-2-2688-0977

E-mail: info@vibsource.com

Report No.: VS-TV-130129-01

Test Item	Test 1 : Random Vibration Test														
Test Condition	<p>Waveform: Random Wave</p> <p>Frequency 5 ~ 150 Hz</p> <p>Range:</p> <table border="0"> <tr> <td>Axial:</td> <td>Vertical (Z Axis)</td> <td>Longitudinal (Y Axis)</td> <td>Longitudinal (X Axis)</td> </tr> <tr> <td>Acceleration:</td> <td>1.01 m/s<sup>2</sup> RMS</td> <td>0.45 m/s<sup>2</sup> RMS</td> <td>0.700 m/s<sup>2</sup> RMS</td> </tr> <tr> <td>PSD:</td> <td>0.0301 (m/s<sup>2</sup>)<sup>2</sup>/Hz ( 5 ~ 20 Hz ) -6dB / octave ( 20 ~ 150 Hz )</td> <td>0.0060 (m/s<sup>2</sup>)<sup>2</sup> / Hz ( 5 ~ 20 Hz ) -6dB / octave ( 20 ~ 150 Hz )</td> <td>0.0144 (m/s<sup>2</sup>)<sup>2</sup> / Hz ( 5 ~ 20 Hz ) -6dB / octave ( 20 ~ 150 Hz )</td> </tr> </table> <p>Vibration Axial: X, Y, Z</p> <p>Single Axis Time: 10 minutes</p> <p>Total Time: 30 minutes</p> <p>FIG 1.1 ~ 1.6: X axis direction mounted</p> <p>FIG 2.1: X axis test screen</p> <p>FIG 3.1 ~ 3.6: Y axis direction mounted</p> <p>FIG 4.1: Y axis test screen</p> <p>FIG 5.1 ~ 5.6: Z axis direction mounted</p> <p>FIG 6.1: Z axis test screen</p>			Axial:	Vertical (Z Axis)	Longitudinal (Y Axis)	Longitudinal (X Axis)	Acceleration:	1.01 m/s <sup>2</sup> RMS	0.45 m/s <sup>2</sup> RMS	0.700 m/s <sup>2</sup> RMS	PSD:	0.0301 (m/s <sup>2</sup> ) <sup>2</sup> /Hz ( 5 ~ 20 Hz ) -6dB / octave ( 20 ~ 150 Hz )	0.0060 (m/s <sup>2</sup> ) <sup>2</sup> / Hz ( 5 ~ 20 Hz ) -6dB / octave ( 20 ~ 150 Hz )	0.0144 (m/s <sup>2</sup> ) <sup>2</sup> / Hz ( 5 ~ 20 Hz ) -6dB / octave ( 20 ~ 150 Hz )
Axial:	Vertical (Z Axis)	Longitudinal (Y Axis)	Longitudinal (X Axis)												
Acceleration:	1.01 m/s <sup>2</sup> RMS	0.45 m/s <sup>2</sup> RMS	0.700 m/s <sup>2</sup> RMS												
PSD:	0.0301 (m/s <sup>2</sup> ) <sup>2</sup> /Hz ( 5 ~ 20 Hz ) -6dB / octave ( 20 ~ 150 Hz )	0.0060 (m/s <sup>2</sup> ) <sup>2</sup> / Hz ( 5 ~ 20 Hz ) -6dB / octave ( 20 ~ 150 Hz )	0.0144 (m/s <sup>2</sup> ) <sup>2</sup> / Hz ( 5 ~ 20 Hz ) -6dB / octave ( 20 ~ 150 Hz )												



# VIBRATION SOURCE TECHNOLOGY CO., LTD.

## Vibration Testing Laboratory

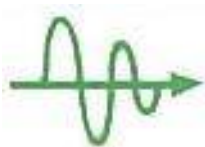
Add: No.29, Lane 65, Sanjun St., Shulin Dist., New Taipei City 23864,  
Taiwan (R.O.C.)

Tel: 886-2-2688-0999 Fax: 886-2-2688-0977

E-mail: info@vibsource.com

Report No.: VS-TV-130129-01

Test Item	Test 2 : Long Life Test (Random Vibration Test)														
Test Condition	<p>Waveform: Random Wave</p> <p>Frequency 5 ~ 150 Hz</p> <p>Range:</p> <table border="0"> <tr> <td>Axial:</td> <td>Vertical (Z Axis)</td> <td>Transverse (Y Axis)</td> <td>Transverse (X Axis)</td> </tr> <tr> <td>Acceleration:</td> <td>5.72 m/s<sup>2</sup> RMS</td> <td>2.55 m/s<sup>2</sup> RMS</td> <td>3.96 m/s<sup>2</sup> RMS</td> </tr> <tr> <td>PSD:</td> <td>0.964(m/s<sup>2</sup>)<sup>2</sup>/Hz ( 5 ~ 20 Hz ) -6dB /octave ( 20 ~ 150 Hz )</td> <td>0.192(m/s<sup>2</sup>)<sup>2</sup> / Hz ( 5 ~ 20 Hz ) -6dB /octave ( 20 ~ 150 Hz )</td> <td>0.461(m/s<sup>2</sup>)<sup>2</sup> / Hz ( 5 ~ 20 Hz ) -6dB /octave ( 20 ~ 150 Hz )</td> </tr> </table> <p>Vibration Axial: X, Y, Z</p> <p>Single Axis Time: 5 hours</p> <p>Total Time: 15 hours</p> <p>FIG 2.2: X axis test screen</p> <p>FIG 4.2: Y axis test screen</p> <p>FIG 6.2: Z axis test screen</p>			Axial:	Vertical (Z Axis)	Transverse (Y Axis)	Transverse (X Axis)	Acceleration:	5.72 m/s <sup>2</sup> RMS	2.55 m/s <sup>2</sup> RMS	3.96 m/s <sup>2</sup> RMS	PSD:	0.964(m/s <sup>2</sup> ) <sup>2</sup> /Hz ( 5 ~ 20 Hz ) -6dB /octave ( 20 ~ 150 Hz )	0.192(m/s <sup>2</sup> ) <sup>2</sup> / Hz ( 5 ~ 20 Hz ) -6dB /octave ( 20 ~ 150 Hz )	0.461(m/s <sup>2</sup> ) <sup>2</sup> / Hz ( 5 ~ 20 Hz ) -6dB /octave ( 20 ~ 150 Hz )
Axial:	Vertical (Z Axis)	Transverse (Y Axis)	Transverse (X Axis)												
Acceleration:	5.72 m/s <sup>2</sup> RMS	2.55 m/s <sup>2</sup> RMS	3.96 m/s <sup>2</sup> RMS												
PSD:	0.964(m/s <sup>2</sup> ) <sup>2</sup> /Hz ( 5 ~ 20 Hz ) -6dB /octave ( 20 ~ 150 Hz )	0.192(m/s <sup>2</sup> ) <sup>2</sup> / Hz ( 5 ~ 20 Hz ) -6dB /octave ( 20 ~ 150 Hz )	0.461(m/s <sup>2</sup> ) <sup>2</sup> / Hz ( 5 ~ 20 Hz ) -6dB /octave ( 20 ~ 150 Hz )												



# VIBRATION SOURCE TECHNOLOGY CO., LTD.

## Vibration Testing Laboratory

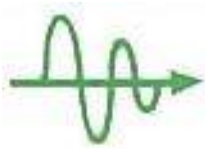
Add: No.29, Lane 65, Sanjun St., Shulin Dist., New Taipei City 23864,  
Taiwan (R.O.C.)

Tel: 886-2-2688-0999 Fax: 886-2-2688-0977

E-mail: info@vibsource.com

Report No.: VS-TV-130129-01

Test Item	Test 3 : Shock Test			
Test Condition	Waveform:	Half Sine Wave		
	Axial:	Vertical (Z Axis)	Transverse (Y Axis)	Longitudinal (X Axis)
	Shock	30 m/s <sup>2</sup>	30 m/s <sup>2</sup>	50 m/s <sup>2</sup>
	Peak Acceleration:			
	Duration Time :	30 ms	30 ms	30 ms
	Vibration Axial:	3 Axis , 6 Faces		
	Shock Time:	3 times		
	Total Time:	18 times		
	FIG 7.1 ~ 7.2:	+X axis direction mounted		
	FIG 8:	+X axis test screen		
	FIG 9.1 ~ 9.2:	-X axis direction mounted		
	FIG 10:	-X axis test screen		
	FIG 11.1 ~ 11.2:	+Y axis direction mounted		
	FIG. 12:	+Y axis test screen		
	FIG 13.1 ~ 13.2:	-Y axis direction mounted		
	FIG 14:	-Y axis test screen		
	FIG 15.1 ~ 15.2:	+Z axis direction mounted		
	FIG 16:	+Z axis test screen		
	FIG 17.1 ~ 17.2:	-Z axis direction mounted		
	FIG 18:	-Z axis test screen		



**VIBRATION SOURCE TECHNOLOGY CO., LTD.**

**Vibration Testing Laboratory**

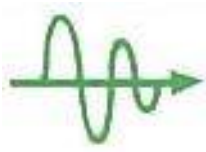
Add: No.29, Lane 65, Sanjun St., Shulin Dist., New Taipei City 23864,  
Taiwan (R.O.C.)

Tel: 886-2-2688-0999 Fax: 886-2-2688-0977

E-mail: info@vibsource.com

Report No.: VS-TV-130129-01

Test Result	Appearance: No external physical damage. Function: Upon Applicant's comment.
Test Conducted By	Report Prepared By
Alex <i>alex</i>	Jane <i>Jane</i>



# VIBRATION SOURCE TECHNOLOGY CO., LTD.

## Vibration Testing Laboratory

Add: No.29, Lane 65, Sanjun St., Shulin Dist., New Taipei City 23864,  
Taiwan (R.O.C.)

Tel: 886-2-2688-0999 Fax: 886-2-2688-0977

E-mail: info@vibsource.com

Report No.: VS-TV-130129-01

Test 1 : Function Test (Operating)  
Test 2 : Long Life Test (Non-Operating)

FIG 1.1: X axis direction mounted

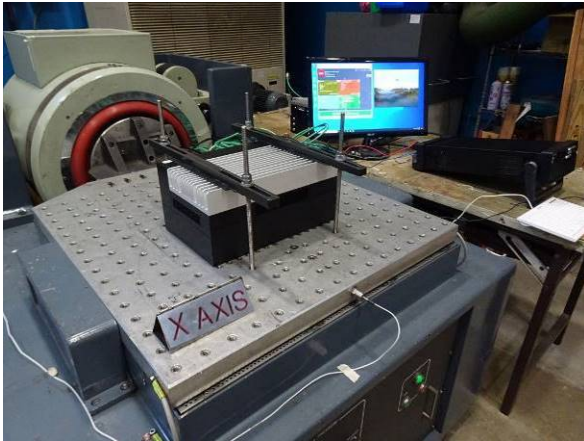


FIG 1.2: X axis direction mounted

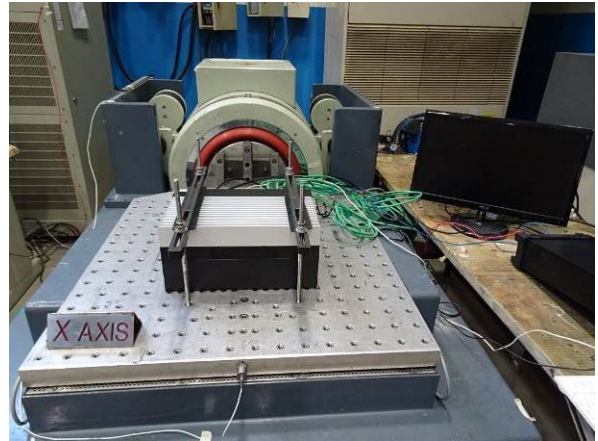


FIG 1.3: X axis direction mounted

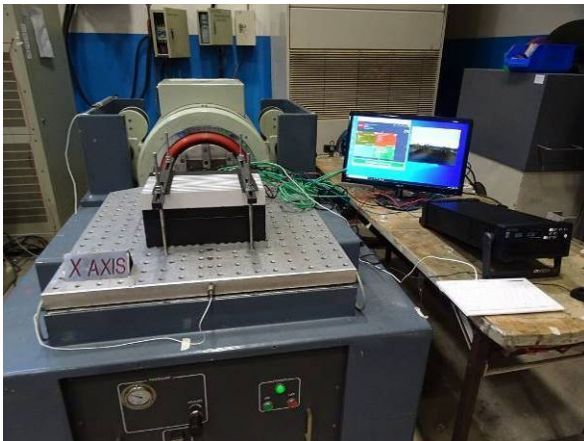


FIG 1.4: X axis direction mounted

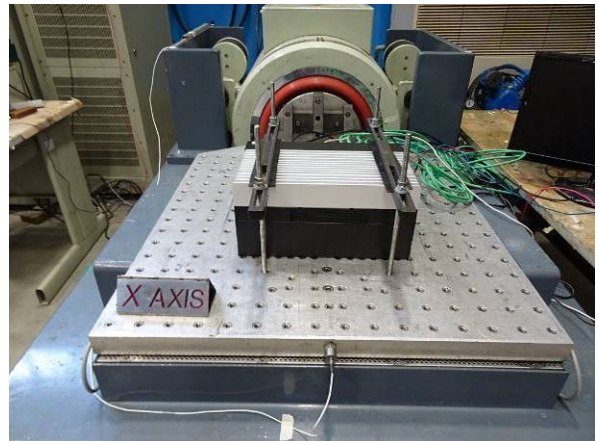
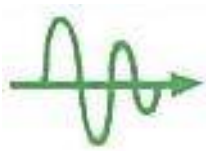


FIG 1.5: X axis direction mounted



FIG 1.6: X axis direction mounted





# VIBRATION SOURCE TECHNOLOGY CO., LTD.

## Vibration Testing Laboratory

Add: No.29, Lane 65, Sanjun St., Shulin Dist., New Taipei City 23864,  
Taiwan (R.O.C.)

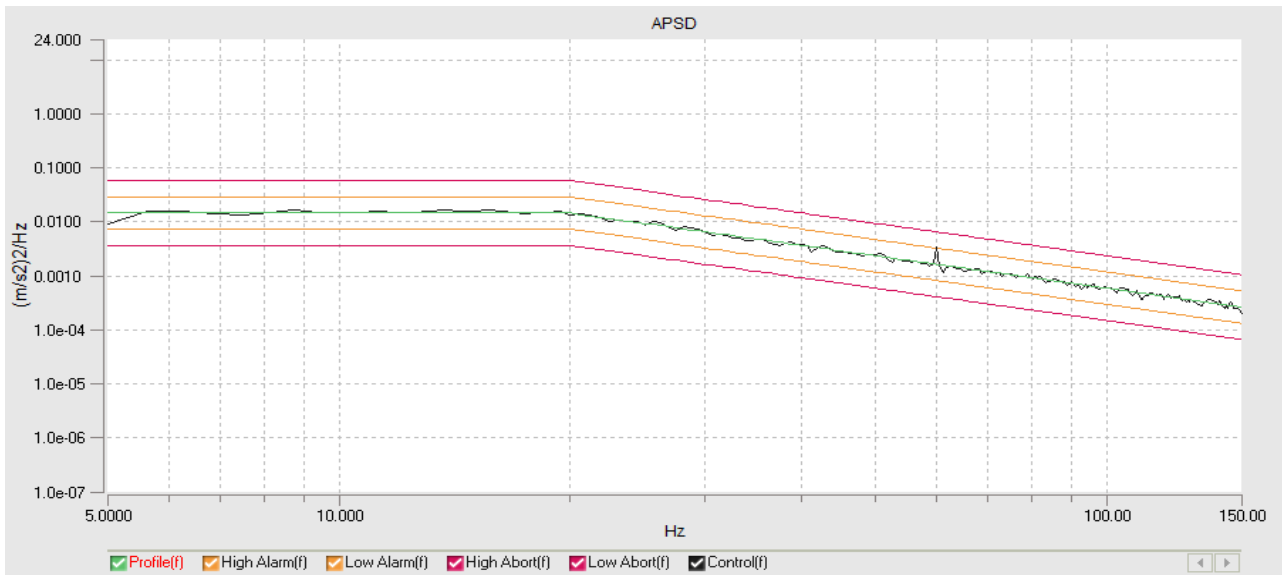
Tel: 886-2-2688-0999 Fax: 886-2-2688-0977

E-mail: info@vibsource.com

Report No.: VS-TV-130129-01

Test 1 : Function Test

FIG 2.1: X axis test screen



Current Level: 100.00 %

Demand RMS: 0.700 m/s<sup>2</sup>

Control RMS: 0.702 m/s<sup>2</sup>

Frame Time: 1.6000 (s)

Lines: 400

dF: 0.6 Hz

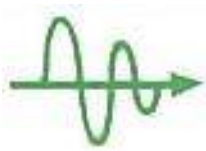
DOF: 300

Current Level Time: 00:10:00

Remaining Time: 00:00:00

Data was saved as a file at time: 2024-1-19 AM 10:12:21





# VIBRATION SOURCE TECHNOLOGY CO., LTD.

## Vibration Testing Laboratory

Add: No.29, Lane 65, Sanjun St., Shulin Dist., New Taipei City 23864,  
Taiwan (R.O.C.)

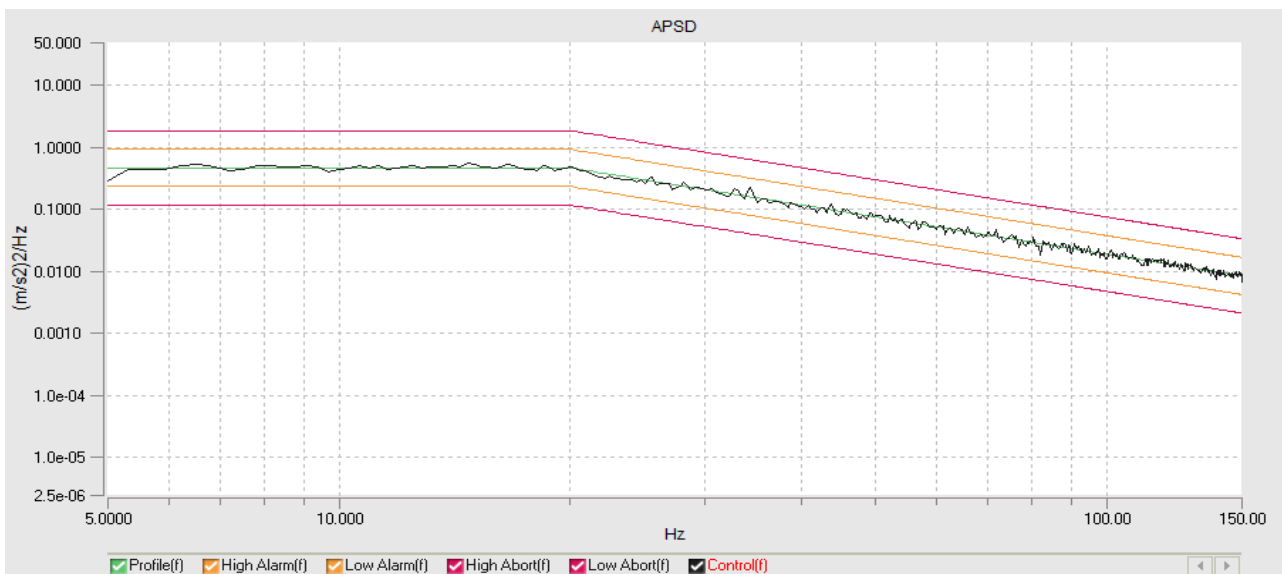
Tel: 886-2-2688-0999 Fax: 886-2-2688-0977

E-mail: info@vibsource.com

Report No.: VS-TV-130129-01

Test 2 : Long Life Test

FIG 2.2: X axis test screen



Current Level: 100.00 %

Demand RMS: 3.960 m/s<sup>2</sup>

Control RMS: 3.948 m/s<sup>2</sup>

Frame Time: 3.2000 (s)

Lines: 800

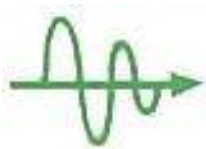
dF: 0.3 Hz

DOF: 200

Current Level Time: 05:00:00

Remaining Time: 00:00:00

Data was saved as a file at time: 2024-1-19 PM 04:14:38



# VIBRATION SOURCE TECHNOLOGY CO., LTD.

## Vibration Testing Laboratory

Add: No.29, Lane 65, Sanjun St., Shulin Dist., New Taipei City 23864,  
Taiwan (R.O.C.)

Tel: 886-2-2688-0999 Fax: 886-2-2688-0977

E-mail: info@vibsource.com

Report No.: VS-TV-130129-01

Test 1 : Function Test (Operating)  
Test 2 : Long Life Test (Non-Operating)

FIG 3.1: Y axis direction mounted

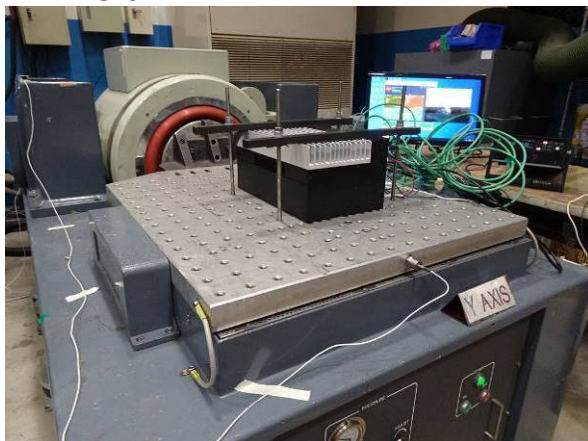


FIG 3.2: Y axis direction mounted



FIG 3.3: Y axis direction mounted



FIG 3.4: Y axis direction mounted

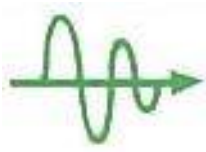


FIG 3.5: Y axis direction mounted



FIG 3.6: Y axis direction mounted





# VIBRATION SOURCE TECHNOLOGY CO., LTD.

## Vibration Testing Laboratory

Add: No.29, Lane 65, Sanjun St., Shulin Dist., New Taipei City 23864,  
Taiwan (R.O.C.)

Tel: 886-2-2688-0999 Fax: 886-2-2688-0977

E-mail: info@vibsource.com

Report No.: VS-TV-130129-01

Test 1 : Function Test

FIG 4.1: Y axis test screen



Current Level: 100.00 %

Demand RMS: 0.450 m/s<sup>2</sup>

Control RMS: 0.451 m/s<sup>2</sup>

Frame Time: 3.2000 (s)

Lines: 800

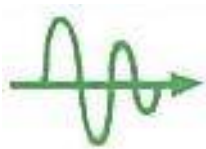
dF: 0.3 Hz

DOF: 200

Current Level Time: 00:10:00

Remaining Time: 00:00:00

Data was saved as a file at time: 2024-1-25 PM 05:51:24



# VIBRATION SOURCE TECHNOLOGY CO., LTD.

## Vibration Testing Laboratory

Add: No.29, Lane 65, Sanjun St., Shulin Dist., New Taipei City 23864,  
Taiwan (R.O.C.)

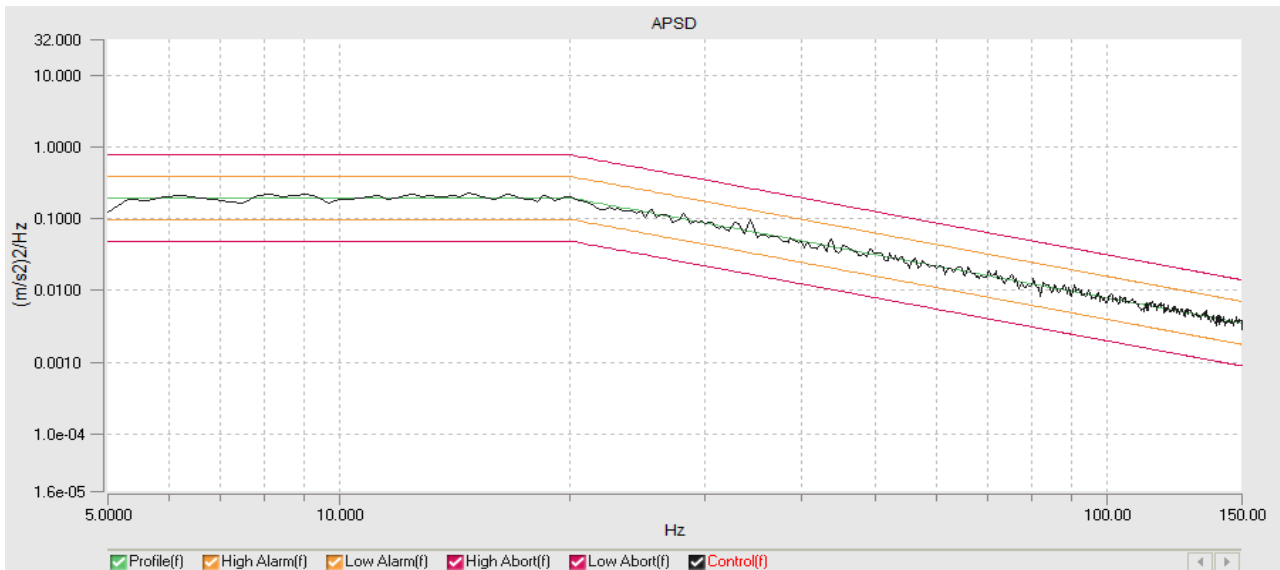
Tel: 886-2-2688-0999 Fax: 886-2-2688-0977

E-mail: info@vibsource.com

Report No.: VS-TV-130129-01

Test 2 : Long Life Test

FIG 4.2: Y axis test screen



Current Level: 100.00 %

Demand RMS: 2.550  $m/s^2$

Control RMS: 2.545  $m/s^2$

Frame Time: 3.2000 (s)

Lines: 800

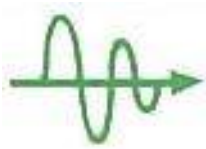
dF: 0.3 Hz

DOF: 200

Current Level Time: 05:00:00

Remaining Time: 00:00:00

Data was saved as a file at time: 2024-1-26 PM 01:55:12



# VIBRATION SOURCE TECHNOLOGY CO., LTD.

## Vibration Testing Laboratory

Add: No.29, Lane 65, Sanjun St., Shulin Dist., New Taipei City 23864,  
Taiwan (R.O.C.)

Tel: 886-2-2688-0999 Fax: 886-2-2688-0977

E-mail: info@vibsource.com

Report No.: VS-TV-130129-01

Test 1 : Function Test (Operating)  
Test 2 : Long Life Test (Non-Operating)

FIG 5.1: Z axis direction mounted

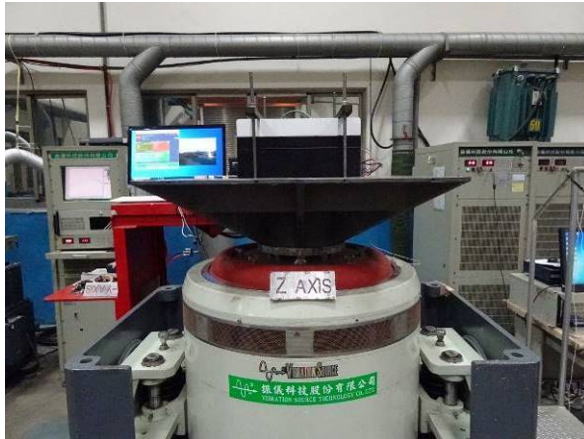


FIG 5.2: Z axis direction mounted



FIG 5.3: Z axis direction mounted



FIG 5.4: Z axis direction mounted

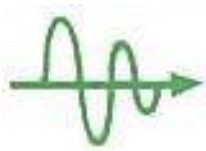


FIG 5.5: Z axis direction mounted



FIG 5.6: Z axis direction mounted





# VIBRATION SOURCE TECHNOLOGY CO., LTD.

## Vibration Testing Laboratory

Add: No.29, Lane 65, Sanjun St., Shulin Dist., New Taipei City 23864,  
Taiwan (R.O.C.)

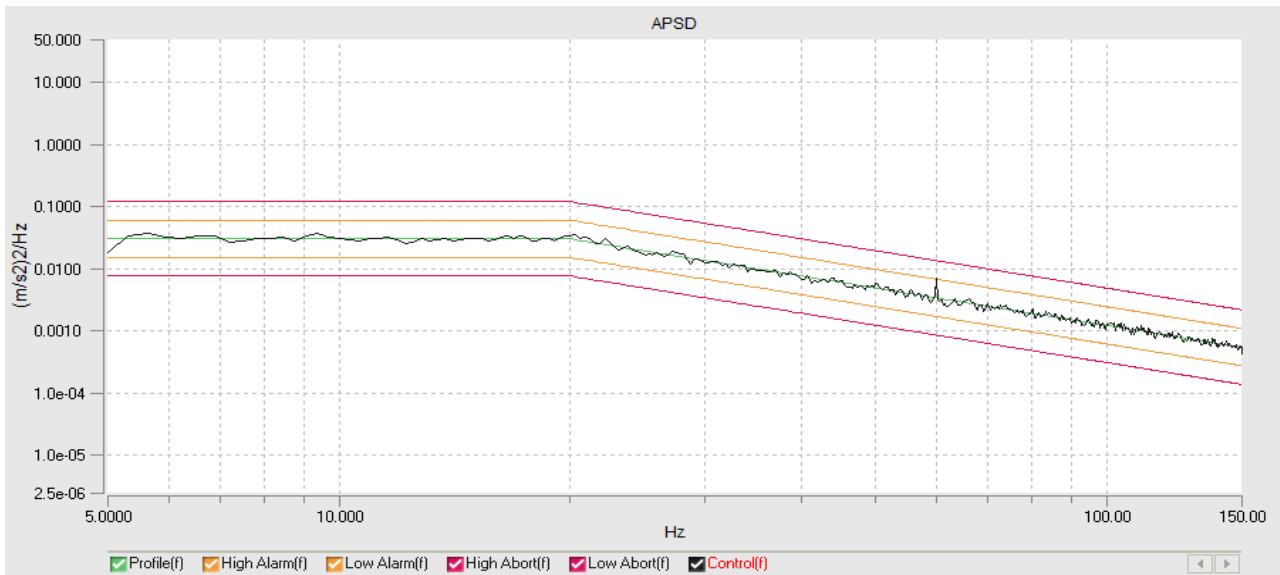
Tel: 886-2-2688-0999 Fax: 886-2-2688-0977

E-mail: info@vibsource.com

Report No.: VS-TV-130129-01

Test 1 : Function Test

FIG 6.1: Z axis test screen



Current Level: 100.00 %

Demand RMS: 1.010 m/s<sup>2</sup>

Control RMS: 1.012 m/s<sup>2</sup>

Frame Time: 3.2000 (s)

Lines: 800

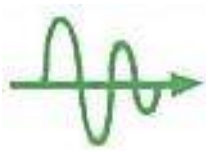
dF: 0.3 Hz

DOF: 300

Current Level Time: 00:10:00

Remaining Time: 00:00:00

Data was saved as a file at time: 2024-1-24 PM 05:50:55



# VIBRATION SOURCE TECHNOLOGY CO., LTD.

## Vibration Testing Laboratory

Add: No.29, Lane 65, Sanjun St., Shulin Dist., New Taipei City 23864,  
Taiwan (R.O.C.)

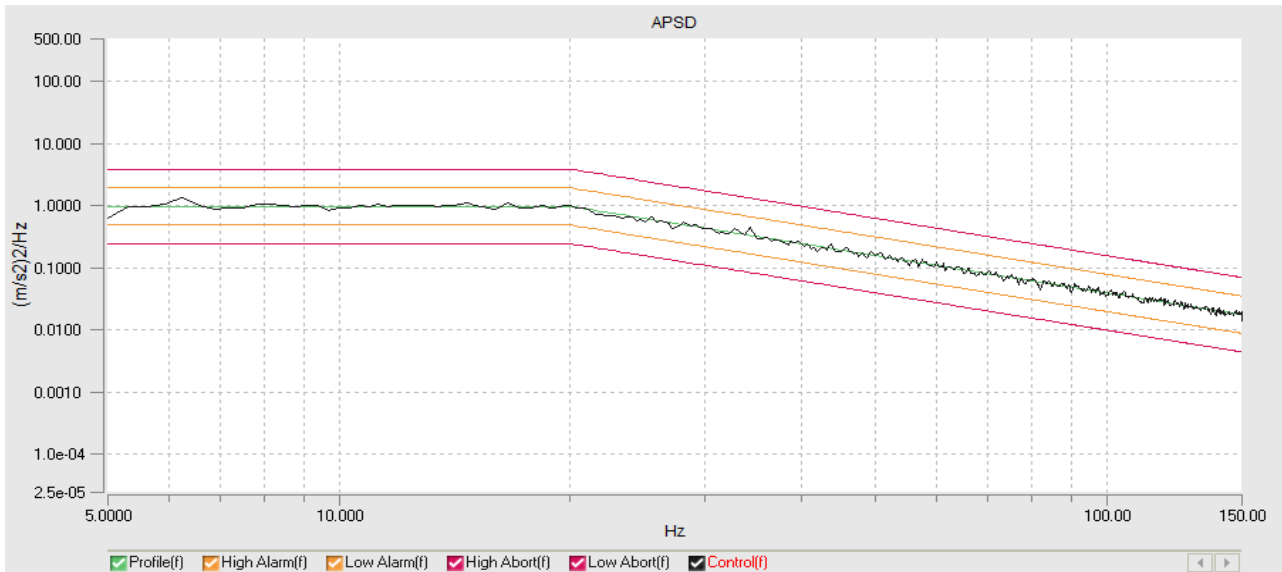
Tel: 886-2-2688-0999 Fax: 886-2-2688-0977

E-mail: info@vibsource.com

Report No.: VS-TV-130129-01

Test 2 : Long Life Test

FIG 6.2: Z axis test screen



Current Level: 100.00 %

Demand RMS: 5.720 m/s<sup>2</sup>

Control RMS: 5.703 m/s<sup>2</sup>

Frame Time: 3.2000 (s)

Lines: 800

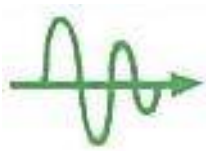
dF: 0.3 Hz

DOF: 300

Current Level Time: 05:00:00

Remaining Time: 00:00:00

Data was saved as a file at time: 2024-1-25 PM 01:59:16



# VIBRATION SOURCE TECHNOLOGY CO., LTD.

## Vibration Testing Laboratory

Add: No.29, Lane 65, Sanjun St., Shulin Dist., New Taipei City 23864, Taiwan (R.O.C.)

Tel: 886-2-2688-0999 Fax: 886-2-2688-0977

E-mail: info@vibsource.com

Report No.: VS-TV-130129-01

### Test 3 : Shock Test

FIG 7.1: +X axis direction mounted

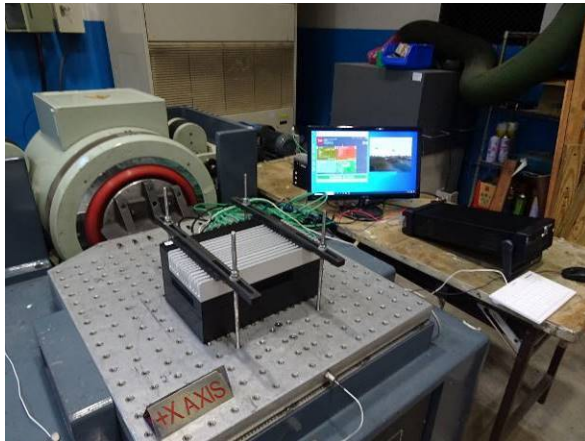


FIG 7.2: +X axis direction mounted

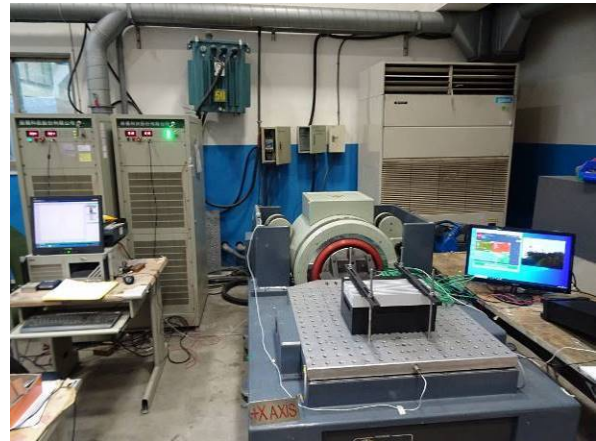
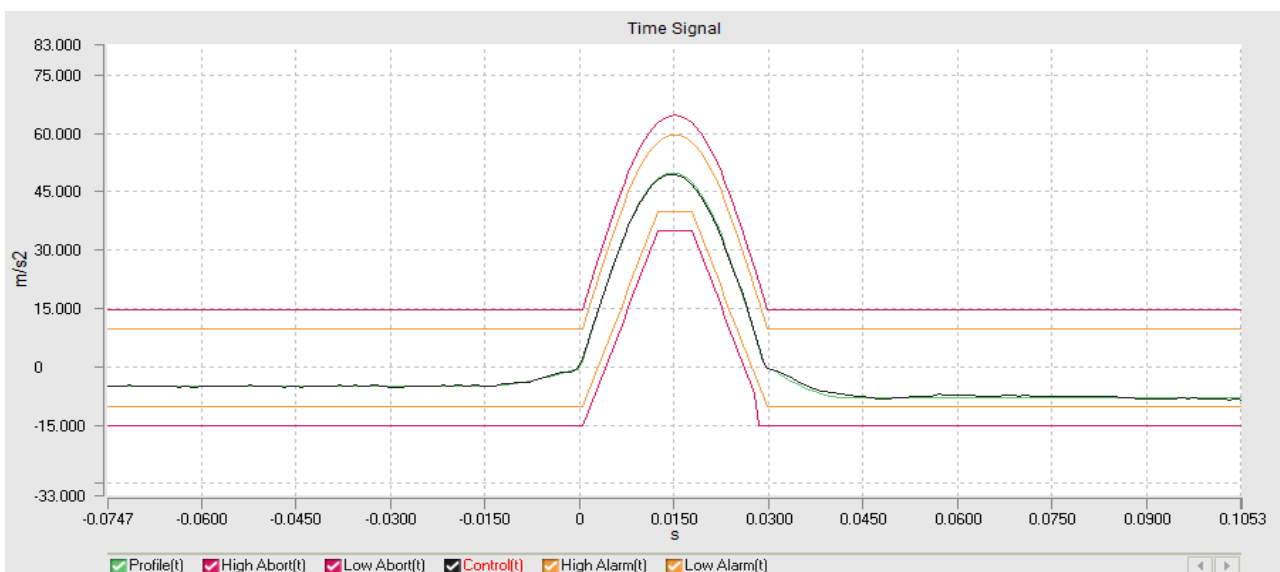


FIG.8 : +X Axis Test screen.



Shock Type:Half Sine

Current level: 100 %

Block Size: 2048

Current Pulses: 3

Data was saved as a file at time:2024-1-19 AM 10:16:46

Mag:50.00 m/s<sup>2</sup>

Demand peak: 50.000 m/s<sup>2</sup>

Frame Time:1.3653 s

Output pulses: 12

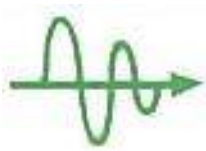
Pulse Duration:30 ms

Control peak:49.628 m/s<sup>2</sup>

dT:0.000666667 s

Remain pulses: 0





# VIBRATION SOURCE TECHNOLOGY CO., LTD.

## Vibration Testing Laboratory

Add: No.29, Lane 65, Sanjun St., Shulin Dist., New Taipei City 23864, Taiwan (R.O.C.)

Tel: 886-2-2688-0999 Fax: 886-2-2688-0977

E-mail: info@vibsource.com

Report No.: VS-TV-130129-01

FIG 9.1: -X axis direction mounted

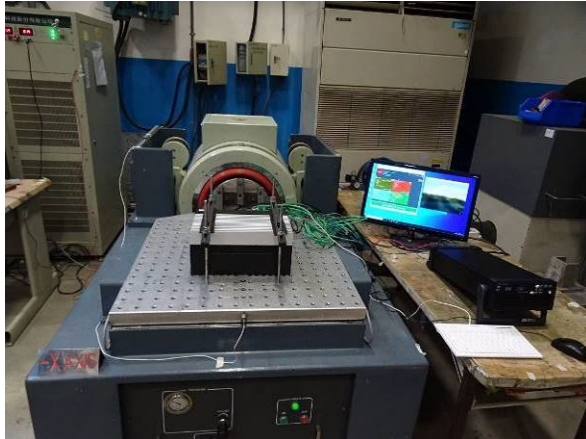
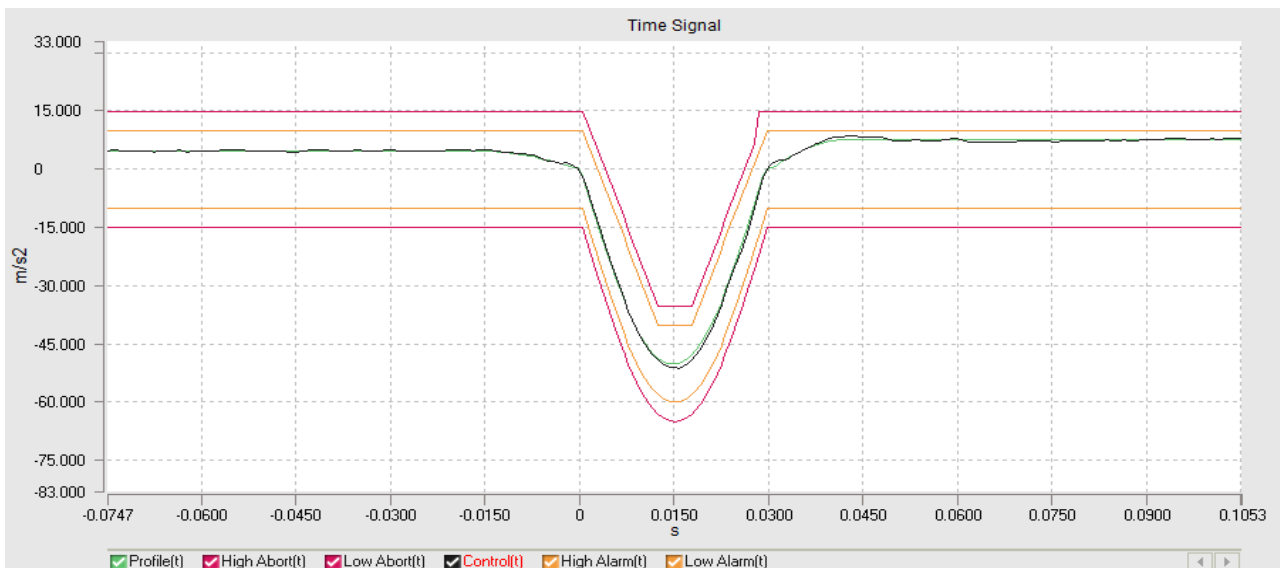


FIG 9.2: -X axis direction mounted



FIG.10 : -X Axis Test screen.



Shock Type:Half Sine

Mag:50.00 m/s<sup>2</sup>

Pulse Duration:30 ms

Current level:100 %

Demand peak: 50.000 m/s<sup>2</sup>

Control peak:51.059 m/s<sup>2</sup>

Block Size: 2048

Frame Time:1.3653 s

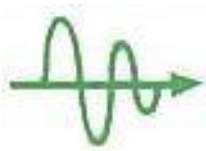
dT:0.000666667 s

Current Pulses: 3

Output pulses: 12

Remain pulses: 0

Data was saved as a file at time:2024-1-19 AM 10:18:34



# VIBRATION SOURCE TECHNOLOGY CO., LTD.

## Vibration Testing Laboratory

Add: No.29, Lane 65, Sanjun St., Shulin Dist., New Taipei City 23864, Taiwan (R.O.C.)

Tel: 886-2-2688-0999 Fax: 886-2-2688-0977

E-mail: info@vibsource.com

Report No.: VS-TV-130129-01

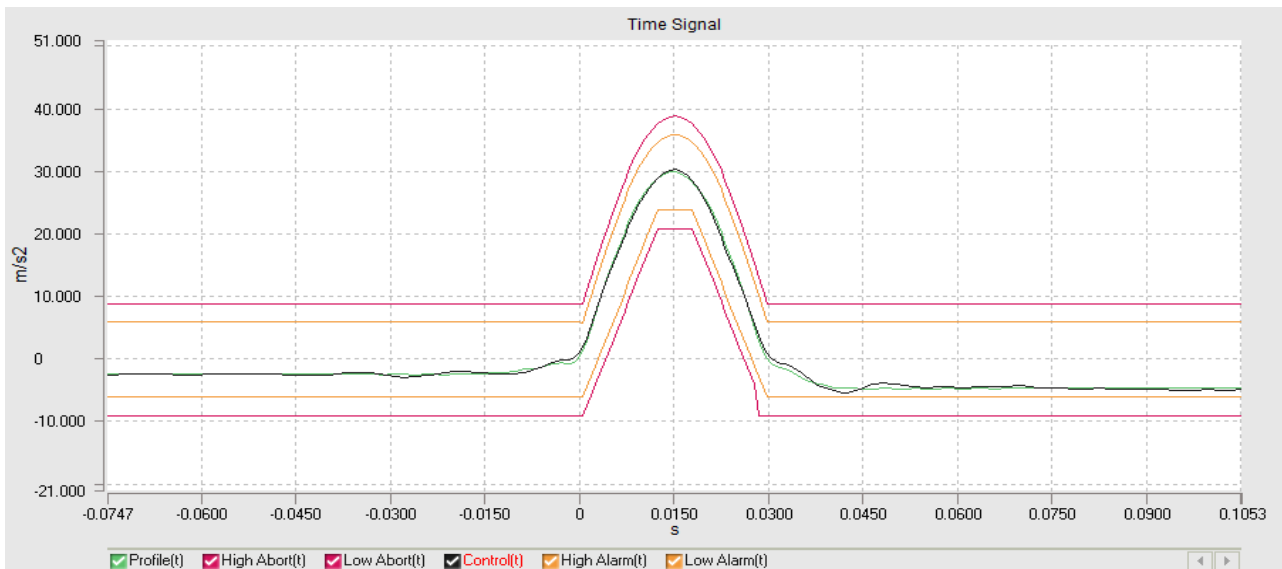
FIG 11.1: +Y axis direction mounted



FIG 11.2: +Y axis direction mounted



FIG.12 : +Y Axis Test screen.



Shock Type:Half Sine

Mag:30.00 m/s<sup>2</sup>

Pulse Duration:30 ms

Current level: 0 dB

Demand peak: 30.000 m/s<sup>2</sup>

Control peak:30.405 m/s<sup>2</sup>

Block Size:2048

Frame Time:1.3653 s

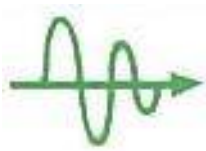
dT:0.000666667 s

Current Pulses: 3

Output pulses: 12

Remain pulses: 0

Data was saved as a file at time:2024-1-25 PM 06:03:47



# VIBRATION SOURCE TECHNOLOGY CO., LTD.

## Vibration Testing Laboratory

Add: No.29, Lane 65, Sanjun St., Shulin Dist., New Taipei City 23864, Taiwan (R.O.C.)

Tel: 886-2-2688-0999 Fax: 886-2-2688-0977

E-mail: info@vibsource.com

Report No.: VS-TV-130129-01

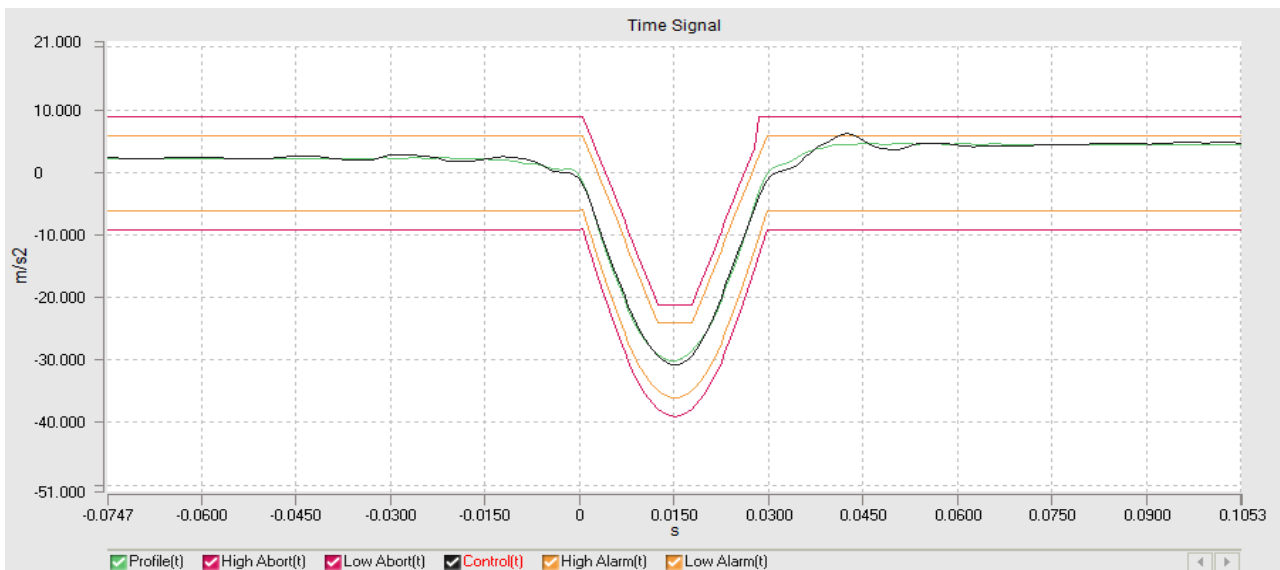
FIG 13.1: -Y axis direction mounted



FIG 13.2: -Y axis direction mounted



FIG.14 : -Y Axis Test screen.



Shock Type:Half Sine

Mag:30.00 m/s<sup>2</sup>

Pulse Duration:30 ms

Current level: 0 dB

Demand peak: 30.000 m/s<sup>2</sup>

Control peak:30.695 m/s<sup>2</sup>

Block Size:2048

Frame Time:1.3653 s

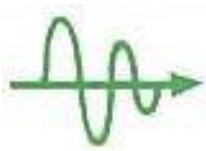
dT:0.000666667 s

Current Pulses: 3

Output pulses: 12

Remain pulses: 0

Data was saved as a file at time:2024-1-25 PM 06:07:27



# VIBRATION SOURCE TECHNOLOGY CO., LTD.

## Vibration Testing Laboratory

Add: No.29, Lane 65, Sanjun St., Shulin Dist., New Taipei City 23864, Taiwan (R.O.C.)

Tel: 886-2-2688-0999 Fax: 886-2-2688-0977

E-mail: info@vibsource.com

Report No.: VS-TV-130129-01

FIG 15.1: +Z axis direction mounted

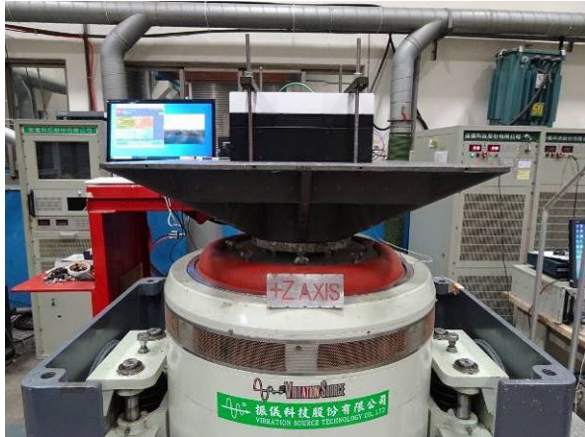
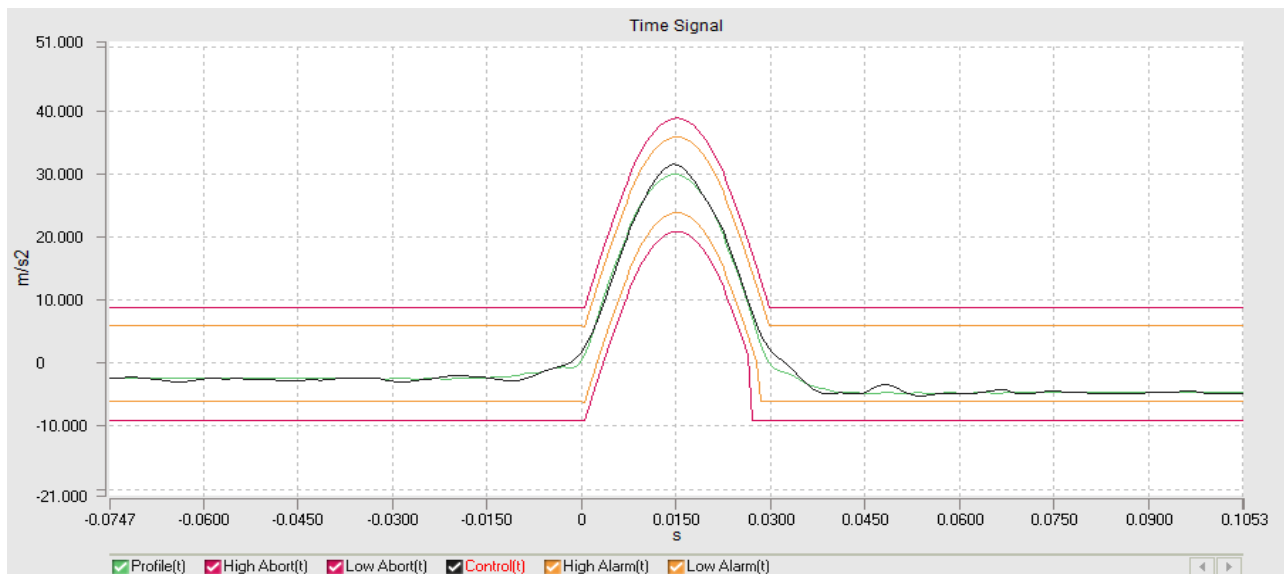


FIG 15.2: +Z axis direction mounted



FIG.16 : +Z Axis Test screen.



Shock Type:Half Sine

Mag:30.00 m/s<sup>2</sup>

Pulse Duration:30 ms

Current level:100 %

Demand peak: 30.000 m/s<sup>2</sup>

Control peak:31.578 m/s<sup>2</sup>

Block Size: 2048

Frame Time:1.3653 s

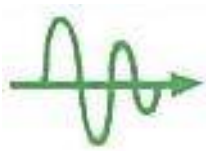
dT:0.000666667 s

Current Pulses: 3

Output pulses: 12

Remain pulses: 0

Data was saved as a file at time:2024-1-24 PM 05:55:28



# VIBRATION SOURCE TECHNOLOGY CO., LTD.

## Vibration Testing Laboratory

Add: No.29, Lane 65, Sanjun St., Shulin Dist., New Taipei City 23864, Taiwan (R.O.C.)

Tel: 886-2-2688-0999 Fax: 886-2-2688-0977

E-mail: info@vibsource.com

Report No.: VS-TV-130129-01

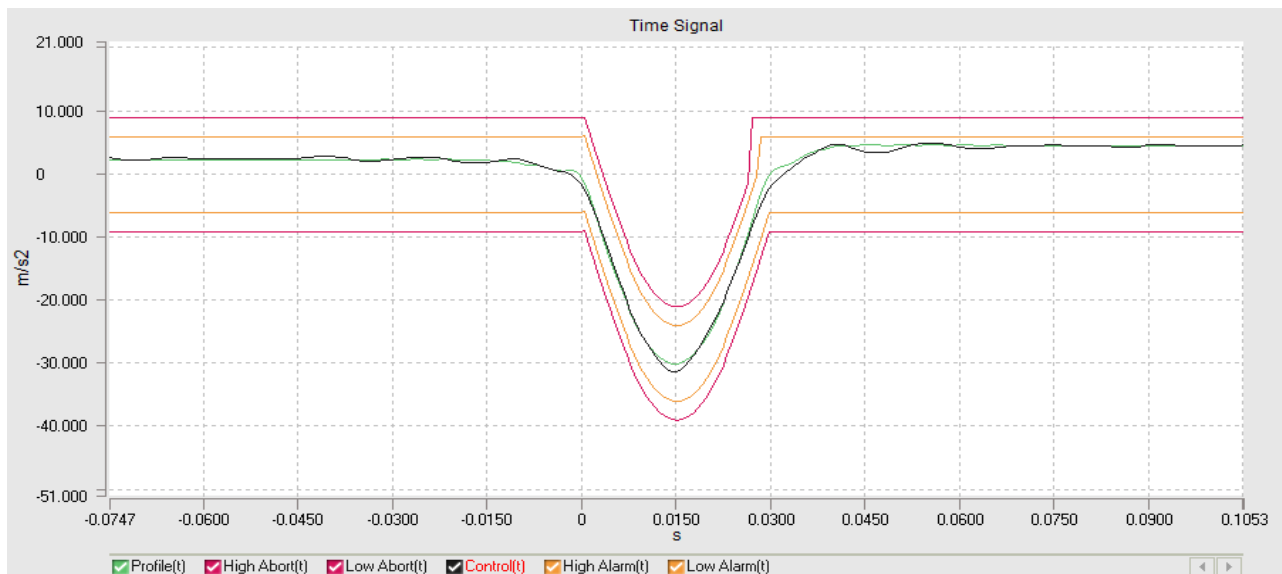
FIG 17.1: -Z axis direction mounted



FIG 17.2: -Z axis direction mounted



FIG.18 : -Z Axis Test screen.



Shock Type:Half Sine

Mag:30.00 m/s<sup>2</sup>

Pulse Duration:30 ms

Current level: 100 %

Demand peak: 30.000 m/s<sup>2</sup>

Control peak:31.262 m/s<sup>2</sup>

Block Size:2048

Frame Time:1.3653 s

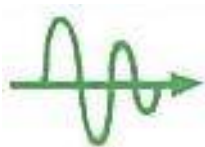
dT:0.000666667 s

Current Pulses: 3

Output pulses: 12

Remain pulses: 0

Data was saved as a file at time:2024-1-24 PM 05:58:13



# VIBRATION SOURCE TECHNOLOGY CO., LTD.

## Vibration Testing Laboratory

Add: No.29, Lane 65, Sanjun St., Shulin Dist., New Taipei City 23864, Taiwan (R.O.C.)

Tel: 886-2-2688-0999 Fax: 886-2-2688-0977

E-mail: info@vibsource.com

Report No.: VS-TV-130129-01

## II 、 Test Description

### 1. Date of Test

This test was performed on Jan 19 ~ 26, 2024

### 2. Test Location

This test was performed on NO. 29, Lane 65, Sanjun St., Shulin Dist., New Taipei City 23864, Taiwan.

### 3. Test Procedures

This test was carried out according to the following documents: (VS-LP-TV-01)V3.1.

### 4. Test standard instruments

Test standard instruments and matching accelerometer, as below:

Specimen	Manufacturer	Model	Serial NO.	Calibration Date	Validity Date
Electrodynamics Type Vibration Tester	Vibration Source Technology CO., LTD	VS-4000V-100	T0501	2024/01/10	2025/01/09
Accelerometer	PCB	J352C34	147744		

Calibration and Traceability to Vibration Source Technology CO., TD.  
Vibration Calibration Laboratory (TAF 2465)  
(Calibration Report No.: VS-CV-130110-01)

Specimen	Manufacturer	Model	Serial NO.	Calibration Date	Validity Date
Electrodynamics Type Vibration Tester	Vibration Source Technology CO., LTD	VS-2000VH	T0701	2023/03/10	2024/03/09
Accelerometer	PCB	J353B32	86797		

Calibration and Traceability to Vibration Source Technology CO., TD.  
Vibration Calibration Laboratory (TAF 2465)  
(Calibration Report No.: VS-CV-120310-01)

## III 、 Reference

- Vibration testing procedures (VS-LP-TV-01),V3.1.  
VIBRATION SOURCE TECHNOLOGY CO., LTD.

The End.